

78823

WI-FI VIDEO SCOPE USER GUIDE

STEELMAN[®] PRO



INTELLI[™]
TECH
SUITE

TABLE OF CONTENTS

Overview	1
Product Description	1
Applications	1
Technical Data	1
Component Overview	2
Wi-Fi Video Scope Hardware Set-up	2
Android™ Phone and Tablet Software Setup	3
iPhone and iPad Software Setup	4
PC Software Setup	5
Using the Steelman PRO Wi-Fi Video Scope - Mobile Devices	6
Camera Selection Page	6
Camera Preview Page	6
Viewing and Sharing Saved Images and Videos	7
Software Settings	9
Using the Steelman PRO Wi-Fi Video Scope - Windows	10
Camera Selection Page	10
Camera Preview Page	10
Viewing and Sharing Saved Images and Videos	11
Software Settings	11

Overview

Product Description

The Steelman PRO Wi-Fi Video Scope is a portable, hand-held, multifunctional inspection camera featuring an ultra-compact 5.5mm diameter camera and a high quality digital sensor that provides crystal clear video output. The camera connects via Wi-Fi to most smart devices and PCs for convenient viewing on any size screen. Using the included app, video, still images, and sound can be recorded, saved, and shared. Up to 5 viewing devices may be connected to the Wi-Fi at one time.

Applications

The Steelman PRO Wi-Fi Video Scope has many potential applications, including, but not limited to:

- Automotive repair and maintenance
- Inspection of hard to reach or hard to see areas on vehicles, equipment, and structures
- Plumbing and construction
- Heating and air conditioning repair

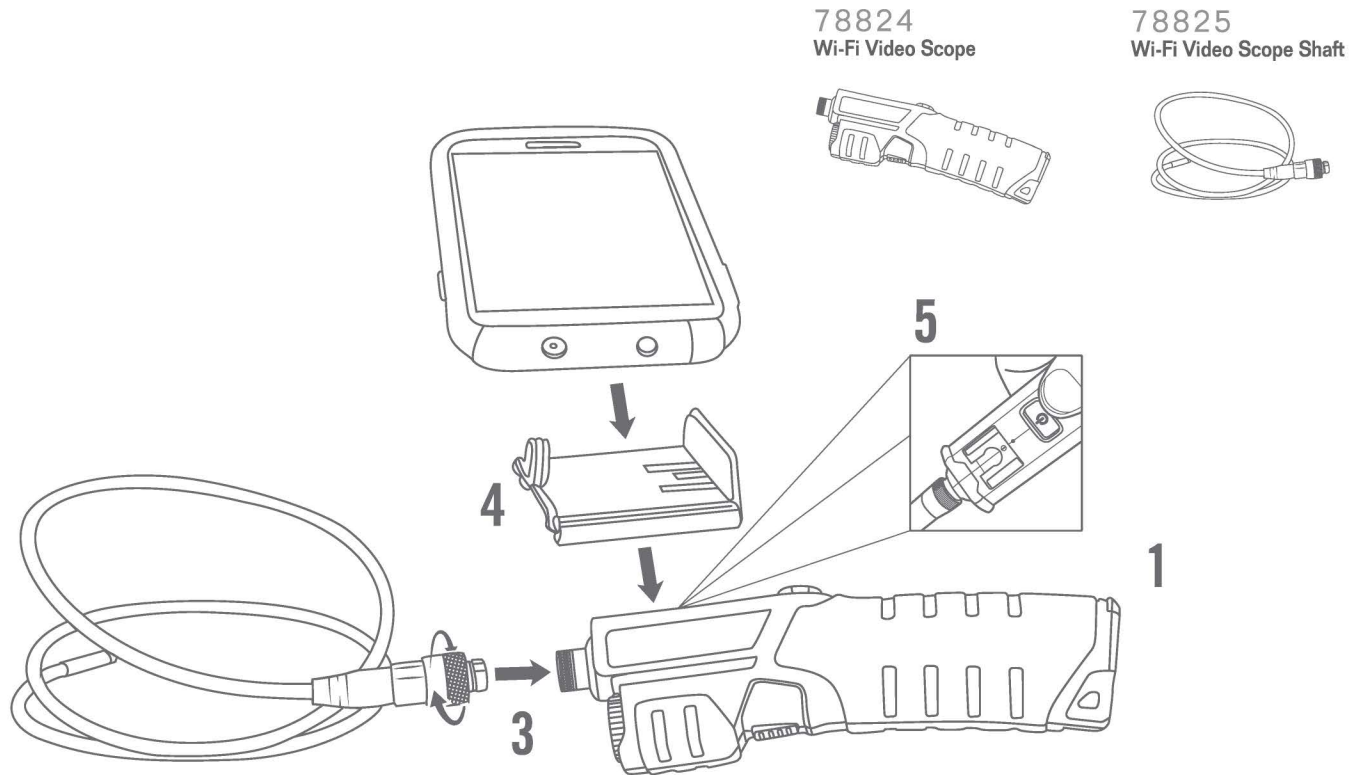
NOTE: This product is not intended for medical use.

Technical Data

Description	Data
Network Standard	IEEE 802.11 b/g/n
Antenna	Built in IPEX antenna
Operating Frequency	2.4 GHz
Data Rate	802.11 a/b/g/n up to 150 Mbps
Camera Diameter	5.5mm
Shaft Length	1 meter
Video Resolution	640x480
Viewing Angle	60°
Depth of Field	60-100mm
Camera Light Source	6 adjustable high intensity LEDs
Water/Dirt Resistance	IP67 certified
LED Flashlight	1 CREE LED
Operating Temperature	32° to 113°F (0° to 45°C) 802
Power Source	4x AA batteries
Max Battery Life	2-3 hours continuous use

Wi-Fi Video Scope Set Up

Component Overview

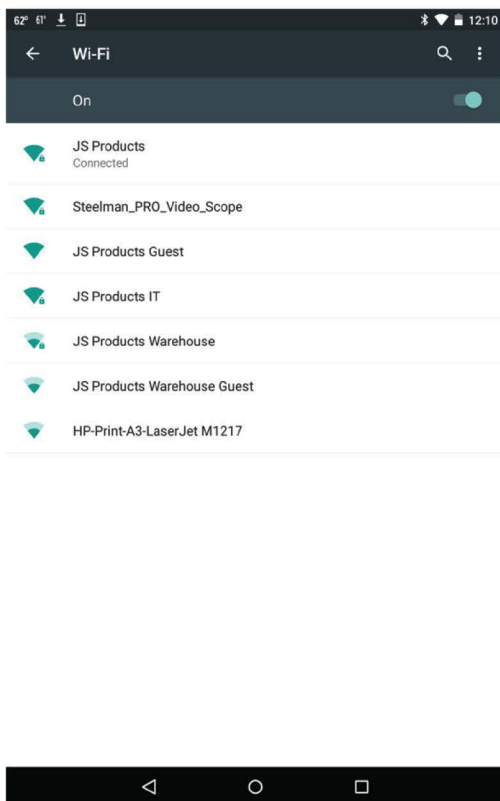


Wi-Fi Video Scope Hardware Set-up

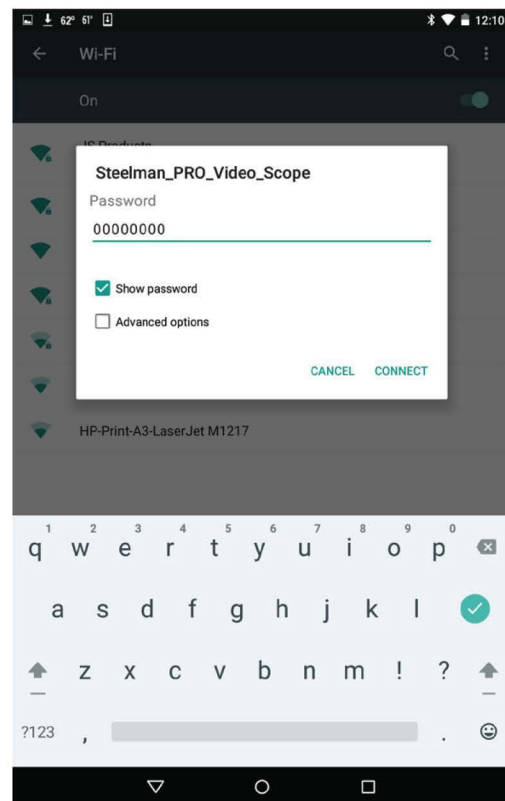
1. Open battery compartment by sliding battery door down
2. Insert 4 AA alkaline batteries, making sure to insert correctly according to polarity
3. Attach camera shaft by twisting barrel connector clockwise
4. If you wish to use the device holder, slide the device holder into the bracket on top of the scope until it clicks and locks
5. Press the POWER button

Android™ Phone and Tablet Software Setup

- Open Google Play™ store and search for “Steelman PRO Video Scope”
- Download and install app
- On your Android™ device, open the Settings page
- From the Settings page, select “Wi-Fi Settings”
- Press the “Search” button to scan for Wi-Fi networks
- Select the “Steelman_PRO_Video_Scope” network
- Connect to the network and enter the password “00000000”
- Start the Steelman PRO Wi-Fi Video scope application



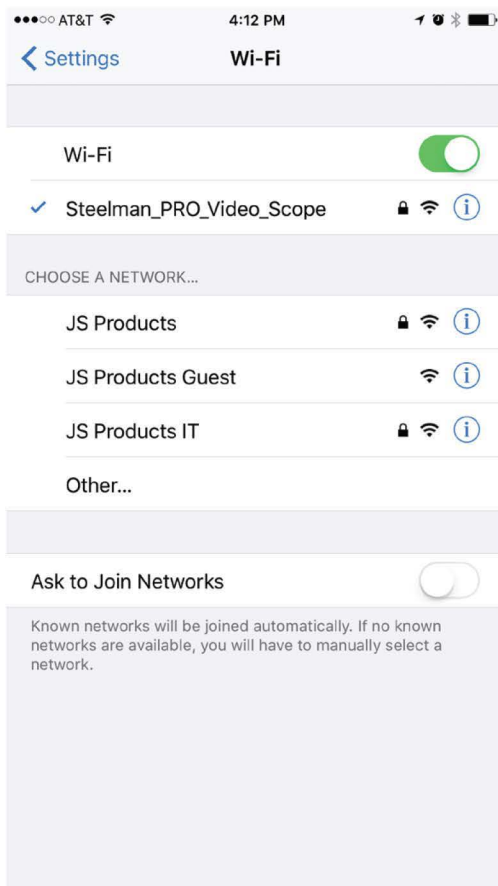
Wi-Fi Settings Screen



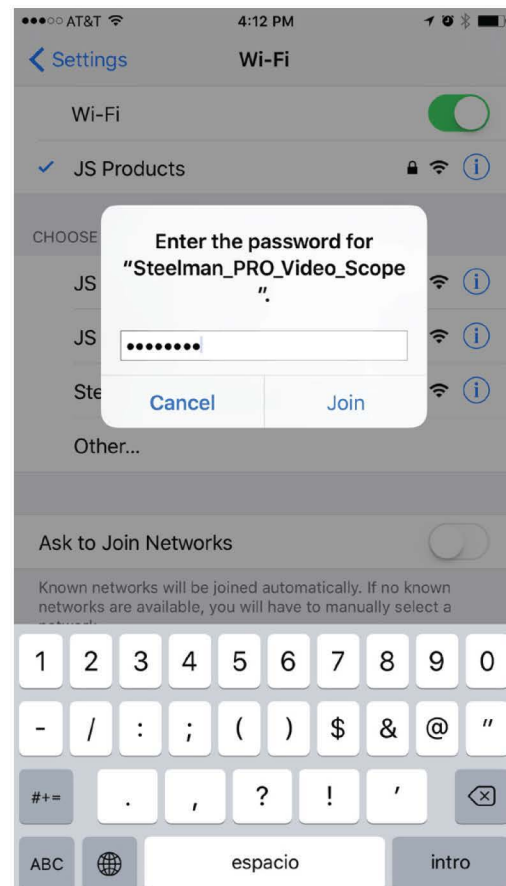
Wi-Fi Connection Screen

iPhone and iPad Software Setup

- Open iTunes Store and search for “Steelman PRO Video Scope”
- Download and install app
- On your iPhone or iPad open the Settings page
- From the Settings page, select “Wi-Fi Settings”
- Select the “Steelman_PRO_Video_Scope” network
- Connect to the network and enter the password “00000000”
- Start the Steelman PRO Wi-Fi Video scope application



Wi-Fi Settings Screen



Wi-Fi Connection Screen

PC Software Setup

- Open web browser and go to www.steelmanpro.com/downloads. Select “Wi-Fi Video Scope”
- From the Wi-Fi Video Scope page, click on “Download Software”
- Once the file has completed downloading, click “run”. Follow prompts to install software.
- On the taskbar, click the Wi-Fi Settings icon 
- Click and highlight “Steelman_PRO_Video_Scope” network



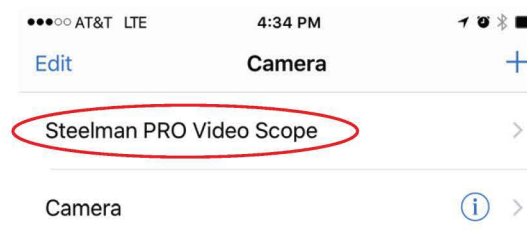
Wi-Fi Networks List

- Click the “Connect” button
- When prompted, enter the Wi-Fi network password, “00000000”
- Start the Steelman PRO Wi-Fi Video Scope application

Using the Steelman PRO Wi-Fi Video Scope - Android, iPhone, and IPad

Camera Selection Page

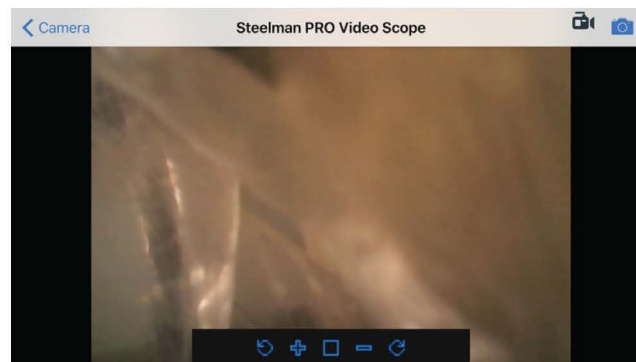
- Launch the Steelman PRO Wi-Fi Video Scope App
- From the “Camera” page, select “Steelman PRO Video Scope”








Camera Page

Camera Preview Page






The camera preview page displays a real time picture of what the camera aimed at and also allows control over camera functions.



Camera Preview Page

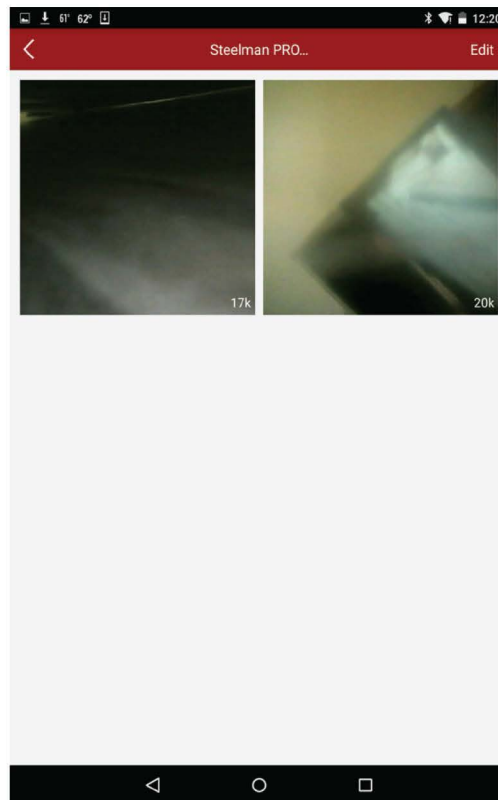
- To increase or decrease the size of the video scope image, press the  and  buttons
- To rotate the view of the video scope image, press the  and  buttons
- To fit the video scope image to your screen automatically, press the  button

NOTE: The picture size and position can also be adjusted by using pinch and drag finger actions on the touch screen of smart devices

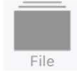
- To capture an image of what the camera is currently displaying, press the  button. A message that the image was successfully saved will be displayed. 
- To record a video, press the  button. The  will flash GREEN and a recording message will appear, along with a timer of the elapsed time of the recording. **REC 00:07**
- To return to the Camera Selection screen, press the  **Back** button.

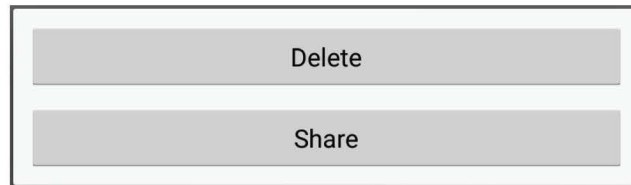
Viewing and Sharing Saved Images and Videos

Still images and videos that are taken during use of the Wi-Fi Video Scope are saved to a media gallery in the app. From the Media Gallery, these files can be viewed and shared with others.



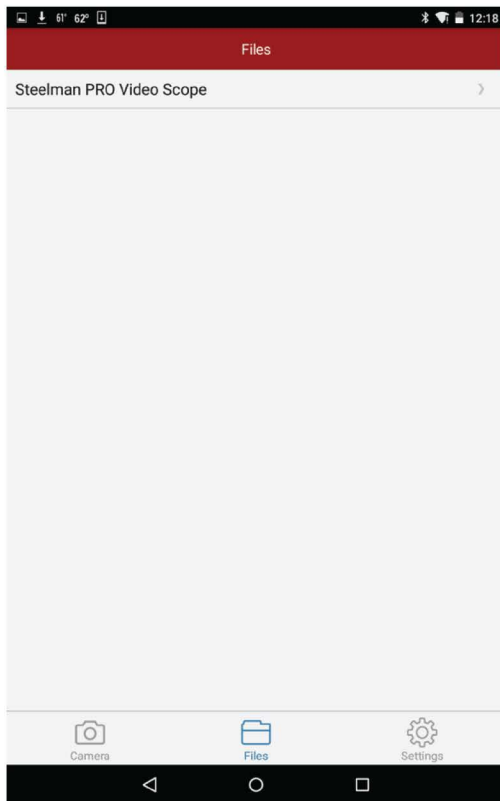
Media Gallery

- To access the Media Gallery, click the  button from the Camera Selection page.
- Select the “Steelman PRO Video Scope” from the Source List. Thumbnails of all saved items will be displayed.
- Tap on any file to view it. Tap and hold on the file to delete or share.

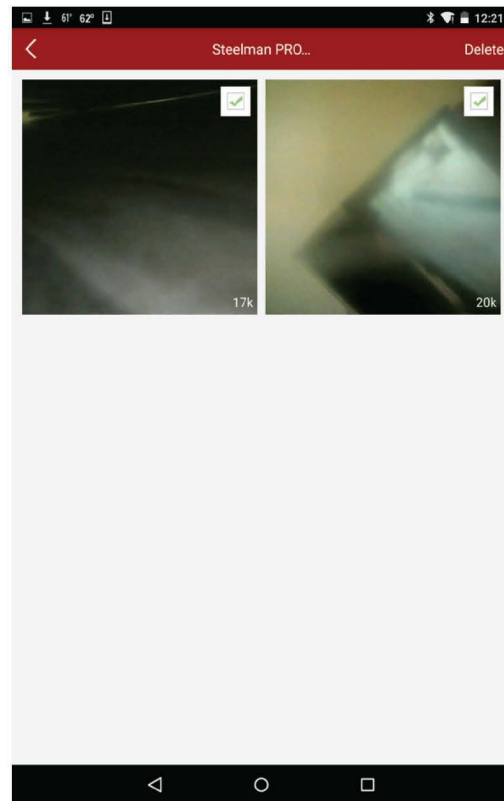


Delete/Share Screen

- Press the back button to return to the Media Gallery
- To delete multiple files, press the **Edit** button. Select the checkbox of each file you wish to delete and press the **Delete** button.




Source List



Edit Page

Software Settings

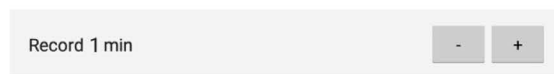
Several software functions can be modified using the Settings page. Additionally, customer support contact information can be found here.

- To access the settings page, click on the  button from the Camera Selection screen.
- The Auto Record Audio slider determines if the microphone will be activated or not during recording. To turn on the microphone, move the slider to right position. To turn off, move the slider to the left position.



Auto Record Audio Slider

- The Record Length selector determines the maximum amount of time per video that will be recorded. To increase or decrease the value, press the record button until the desired value is achieved.



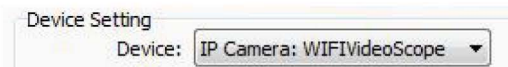
Record Length Selector

- The About Us button gives useful information about the product, including contact information for customer service.

Using the Steelman PRO Wi-Fi Video Scope - Windows

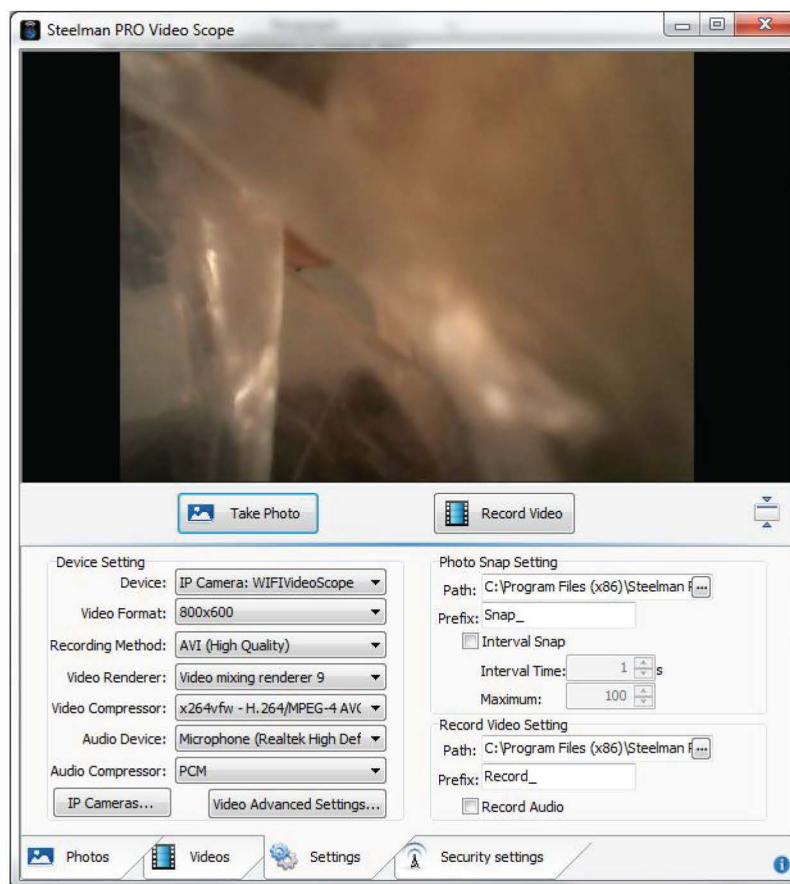
Camera Selection Page

- Launch the Steelman PRO Wi-Fi Video Scope App
- From the “Settings” page, select Device “IP Camera:WifiVideoScope”


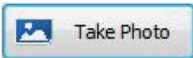
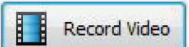


Camera Preview Page




The camera preview area displays a real time picture of what the camera aimed at and also allows control over camera functions.



Camera Preview Page

- To view in full screen mode, click the  button
- To capture an image of what the camera is currently displaying, click the  button. The image will be saved to the Photos tab
- To record a video, press the  button. The video will be saved to the Videos tab.

Viewing and Sharing Saved Images and Videos

- Videos and Photos can be viewed by going to the Photos or Videos Tab and clicking on the desired image or video.
- To print photos, click on the  button
- To email photos, click on the  button
- To delete photos or videos, click on the file you wish to delete and then click the  button

Software Settings

Advanced users can modify camera settings on the Settings tab. Additionally, the location where pictures and video are stored can be changed on this tab

- To access the settings page, click on the  Settings tab.