

78752



SmartEAR™ 3 LITE
NOISE & VIBRATION DETECTION

USER GUIDE
for Windows®

STEELMAN® PRO



TABLE OF CONTENTS

Installation and Use of Steelman™PRO SmartEAR™3 LITE	1
Initializing Program and Interface Window	2
Pairing Bluetooth® Module	3
Interface Help and User Information	4
Orientation Display Mode	5
View Mode	6
Graph Mode	7
Ambient Sound Reset, Offset, and Channel Selection	8
Settings	9
Equalizer	10
Charging Instructions	11


Installation and Use of SmartEAR™3 LITE

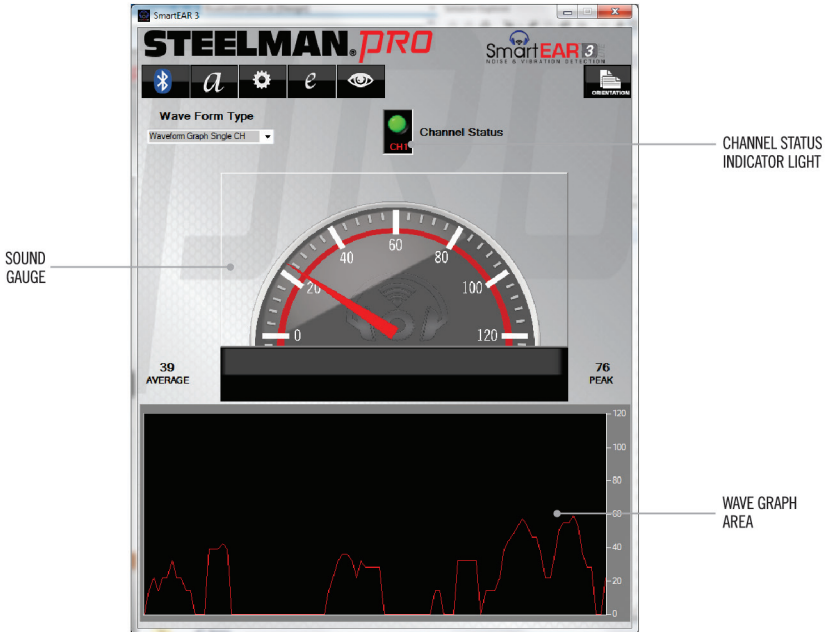
- Download Bluesoleil driver zipped file at: steelmanpro.com/smartear/downloads
- Download SmartEAR™3 LITE at: steelmanpro.com/smartear/downloads
- Make sure you have administrative rights during installation
- Insert USB Bluetooth® Dongle into free USB port on your windows device
- Unzip the Bluesoleil driver
- Run setup from Unzipped Directory/BlueSoleil Driver/Install. This will install the Bluesoleil driver, please follow instructions. You may have to restart your device/computer
- Run the SmartEAR™3 LITE setup file, this will install SmartEAR™3 LITE
- After completing the initial set-up, you can begin analyzing and pinpointing the location of the noise or vibration sounds that you are attempting to diagnose



NOTE: Before attaching hardware to your Windows® device, please see the Quick Set-up Guide provided in packaging

Initializing Program and Interface Window

- To initiate application, click the Steelman™PRO SmartEAR™3 LITE  shortcut from the desktop of your Windows® device
- Once the application has finished loading, it will take you to the user interface where the user will be able to navigate throughout the application

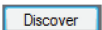
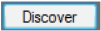
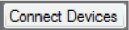




USER INTERFACE

Pairing Bluetooth® Module




- Switch power on for Bluetooth® Module by inserting into either the Sound Wand or Sensor Clamps. Ensure modules are fully charged before each use

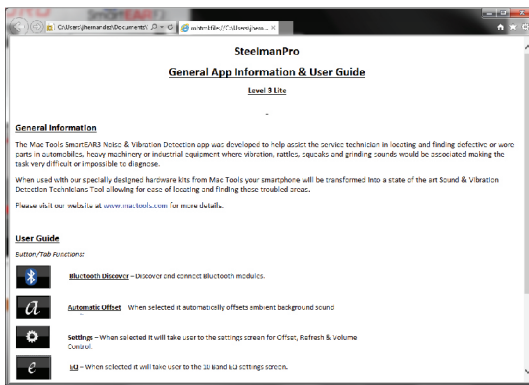
NOTE: The lights on the Bluetooth® Module will flash RED and BLUE intermittently to show that the module is powered on

- A Bluetooth® Setup window will pop up. Click on the  button to initiate pairing. A list of discoverable devices will appear. For ease of pairing, the Bluetooth® Module has its serial number printed on the back. It may take up to 15 seconds for the Bluetooth® Module to show up after clicking the  button
- Once the Bluetooth® Module has been discovered, it can be connected to the device by clicking the button 
- If connection is successful, the “Choose Audio Output” window will appear
- Choose an audio output preference. You may select either PC speakers or headphones. If sound is not working on the selected audio output, you must re-pair the device and choose another audio device. Re-pair device by clicking the  button and follow the steps from the beginning of this page (to start re-pairing, the user must disconnect the Bluetooth® Module and then reconnect to begin the pairing process again)
- The channel status indicator lights on the software will be RED when there is no connection on the channel. When the light on the software is YELLOW, a connection has been established between the software and the hardware that the Bluetooth® Module is plugged into. When the light on the software interface is GREEN, the channel is active and testing can commence
- After initial setup, each time the software is rebooted or restarted, it will automatically reconnect old pairings
- If user would like to rediscover Bluetooth® devices, click the  button

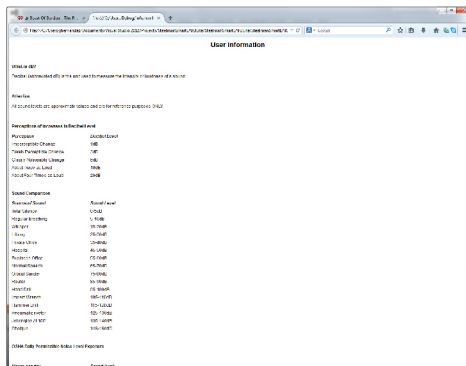
NOTE: SmartEAR™ 3 LITE may only be paired with 1 Bluetooth® Module

Interface Help and User Information

- Click the  button in the menu toolbar of the user interface to access refresh rate, offset, and volume controls
- Click the  button from the settings screen for the HELP window
- Click the  button from the settings screen for the INFORMATION window
- These screens display additional reference information for sound comparison and tips on use of the application




HELP WINDOW



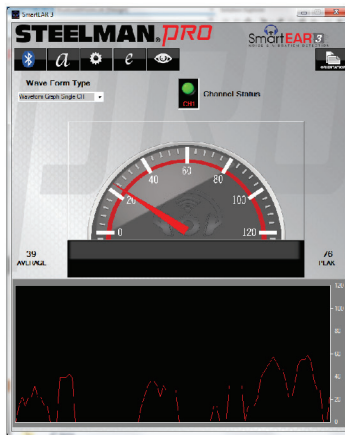
INFORMATION WINDOW

Orientation Display Mode

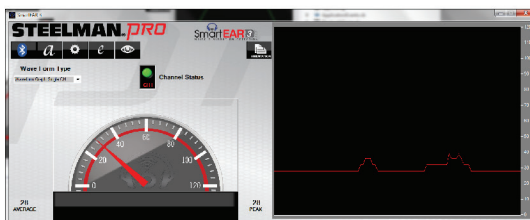
- Select the desired orientation display mode. There are two orientation display modes: Portrait and Landscape
- Click the  button to change between display modes

NOTE: The default display mode is Landscape

NOTE: Some screen resolutions are not supported




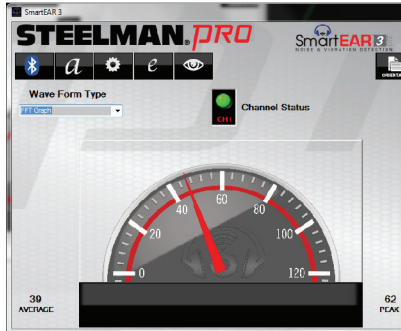
PORTRAIT



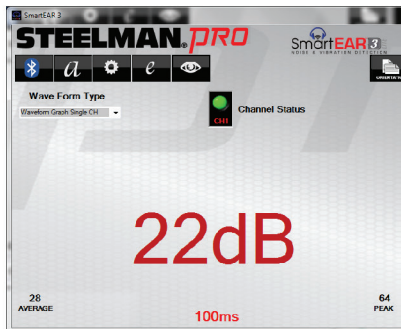
LANDSCAPE

View Mode

- After selecting the Orientation Mode, select the desired viewing mode. There are two viewing modes: Analog and Digital
- Click the  button to change between views

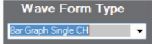


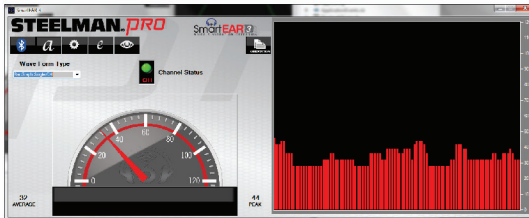
ANALOG GAUGE



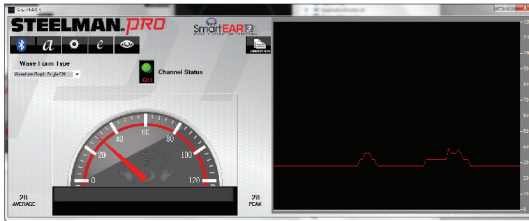
DIGITAL GAUGE

Graph Mode

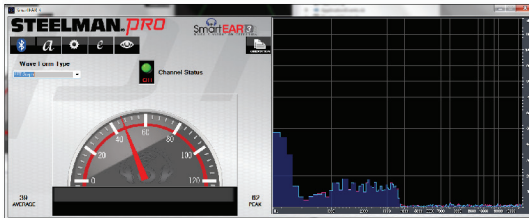
- To select the desired graph mode click the  menu button. There are 4 graph types: Bar, Waveform, FFT, and Spectrum



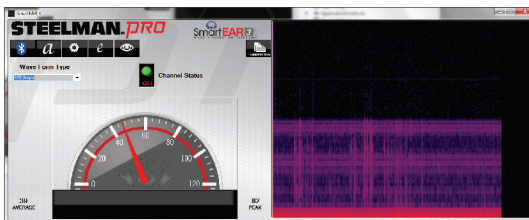
BAR



WAVEFORM






FFT

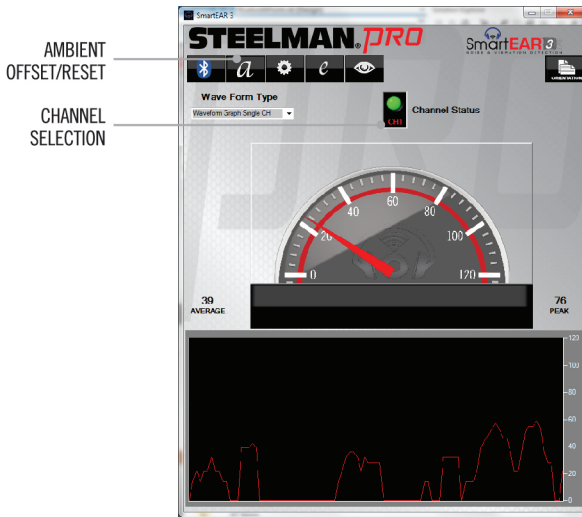


SPECTRUM

Ambient Sound Reset, Offset, and Channel Selection


- Click the  button for ambient sound reset (this is recommended for areas where there is excess or disruptive background noise)
- Click the  button again for ambient sound offset (this will restore sound settings to location when originally powered)
- Click the text of the  button for the desired channel for the corresponding clamp that you would like to listen to and see visual output for

NOTE: GREEN indicates the channel is active and sound and visual output will occur on your device. YELLOW indicates the channel is connected with a Bluetooth® Module but in Standby mode. RED indicates the channel does not have a Bluetooth® Module connected



USER INTERFACE



Settings

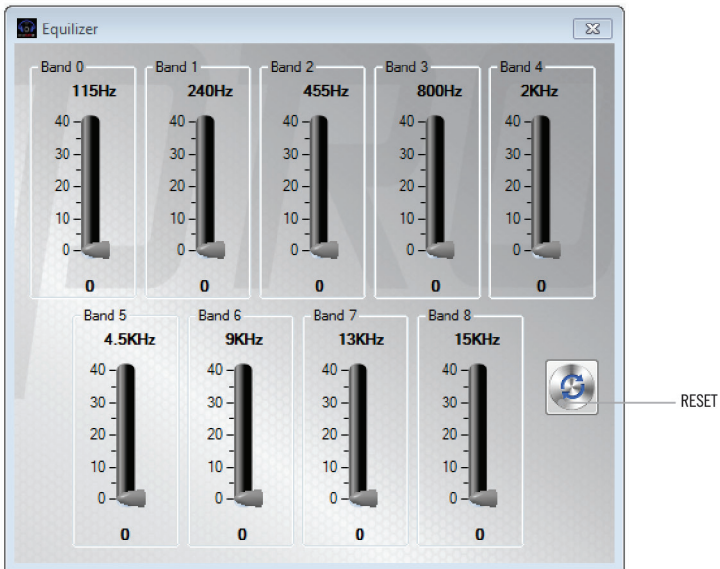
- From the user interface, click the  button for control settings
- The refresh rate can be fine-tuned depending on how the user would like to see the output (the higher the refresh rate the slower the visual output)
- The offset settings can be fine-tuned to the user's specifications depending on background noise
- The volume can be adjusted manually by moving the slide bar under the volume heading
- Close the window to return to the user interface



SETTINGS WINDOW

Equalizer

- Click the  button to access the 9-Band Equalizer controls
- After making manual adjustments to the equalizer close the window
- Click the  button to reset the equalizer to default settings



EQUALIZER WINDOW

Charging Instructions

To charge the Bluetooth® Module, plug the mini USB male connector end of the charging cable directly into the Bluetooth® Module. Plug the USB male connector end of the charging cable into the provided 5VDC 1A power supply, or alternatively, into any available powered female USB port. The GREEN indicator lights on the Bluetooth® Module will illuminate, indicating that the Module is charging. When charging is complete, the GREEN indicator lights on the Bluetooth® Module will dim indicating that the Module is in standby mode and ready for use. Allow 2-3 hours for the initial charge of the Bluetooth® Module to ensure a full charge.

Patent Pending

 **Designed in Las Vegas, NV**

Made in China

Windows is a registered trademark of Microsoft Corporation in the United States and other countries.

The Bluetooth® word mark and logos are registered trademarks owned by Bluetooth SIG, Inc. and any use of such marks by JS Products is under license. Other trademarks and trade names are those of their respective owners.

Steelman®PRO SmartEAR™ 3 LITE is backed by a 90 day warranty. This warranty covers manufacturer defects and workmanship. The warranty excludes misuse or abuse and normal wear and tear. Exclusion is not allowed in some states and may not apply. This warranty gives you specific legal rights, and you may have other rights, which vary from state to state.